



PHILHARMONIC CENTER *for the* ARTS

Theater Specifications Package

Hayes Hall

5833 Pelican Bay Boulevard, Naples FL 34108-2740

Production & Programming Department Personnel

Naomi Buck – Director of Programming & Production	(239) 254-2672	nbuck@thephil.org
Judy Driscoll – Programming Coordinator	(239) 254-2672	jdriscoll@thephil.org
Crystal Diggs – Guest Artist Services Coordinator	(239) 254-2673 (813) 787-3792 (Cell)	cdiggs@thephil.org
Bob Powers – Resident Company Production Supervisor	(239) 254-2675 (239) 877-3407 (Cell)	bpowers@thephil.org
Joel Poppert – Senior Production Manager	(239) 254-2619 (239) 289-3856 (Cell)	jpoppert@thephil.org
Brian Burney – Production Manager	(239) 254-2677 (239) 289-3106 (Cell)	bburney@thephil.org
Nancy Andrews – House Manager	(239) 597-0656	nandrews@thephil.org
Joyce Wiedeback – House Manager	(239) 254-2684	jwiedeback@thephil.org



PHILHARMONIC CENTER *for the ARTS*

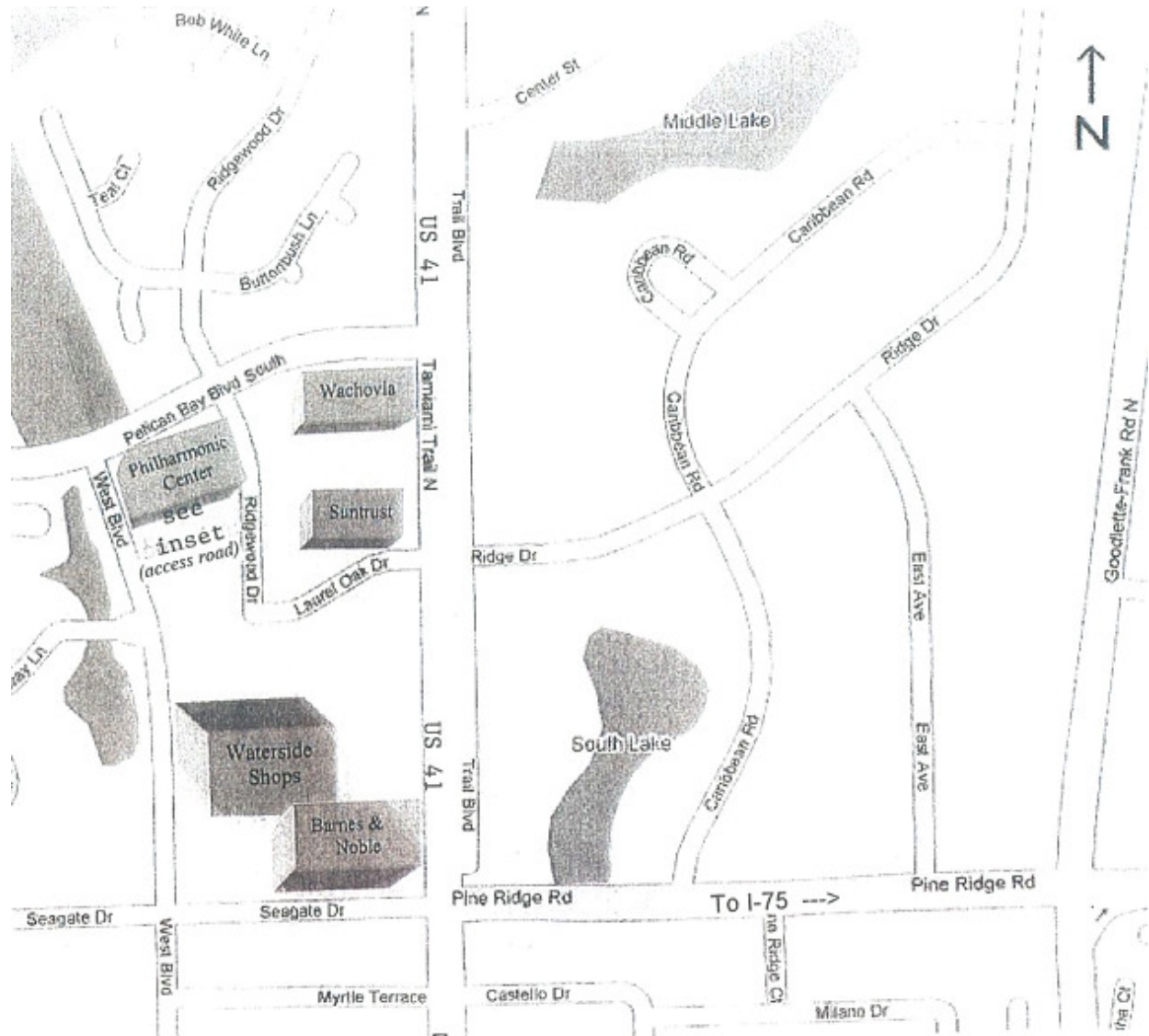
Theater Specifications Package

Hayes Hall

5833 Pelican Bay Boulevard, Naples FL 34108-2740

Directions to the Center

- Take I-75 to Exit #107 (Pine Ridge Road).
- Go West on Pine Ridge Road approximately 5 miles to U. S. 41 (Tamiami Trail).
- Go North (right) on US 41 to the first stoplight (Pelican Bay Blvd South).
- Go West (left) on Pelican Bay Blvd ¼ mile and the theater is on your left.
- Go past the main entrance and around the block to get to the loading dock and stage door located on the southwest corner of the building. See detail next page.



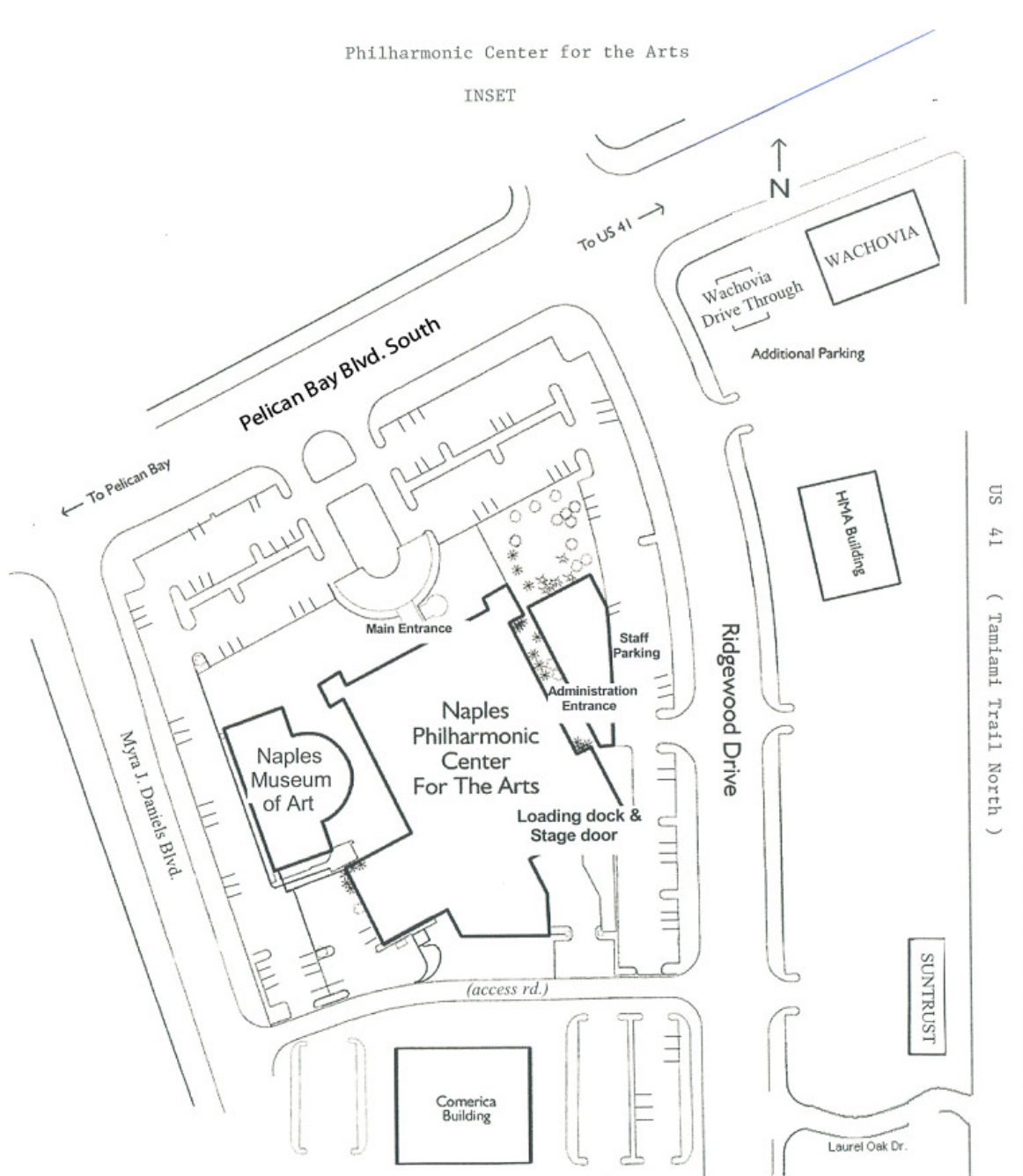


PHILHARMONIC CENTER *for the* ARTS

Theater Specifications Package

Hayes Hall

5833 Pelican Bay Boulevard, Naples FL 34108-2740





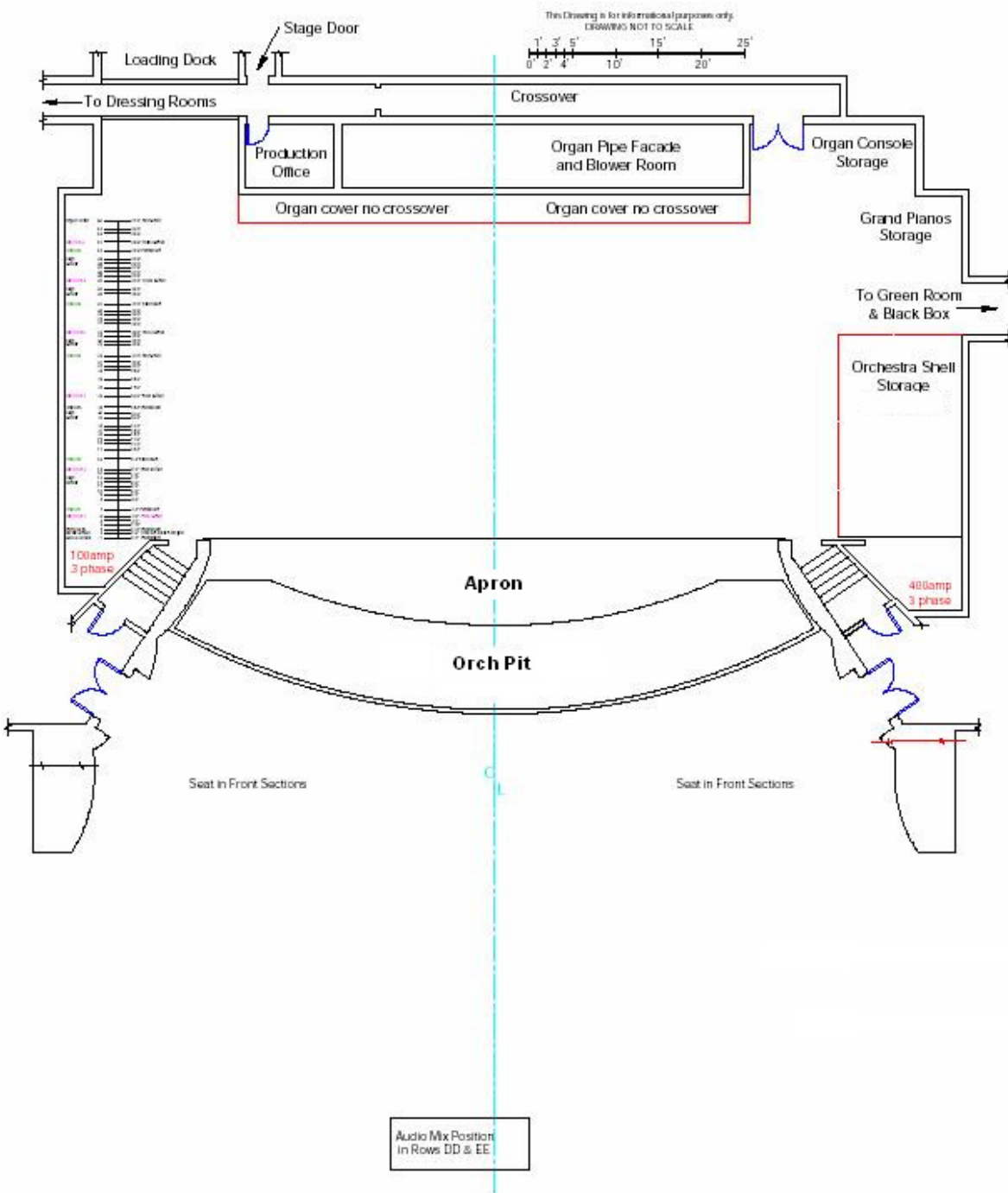
PHILHARMONIC CENTER *for the ARTS*

Theater Specifications Package

Hayes Hall

5833 Pelican Bay Boulevard, Naples FL 34108-2740

Hayes Hall Ground and Section Plan



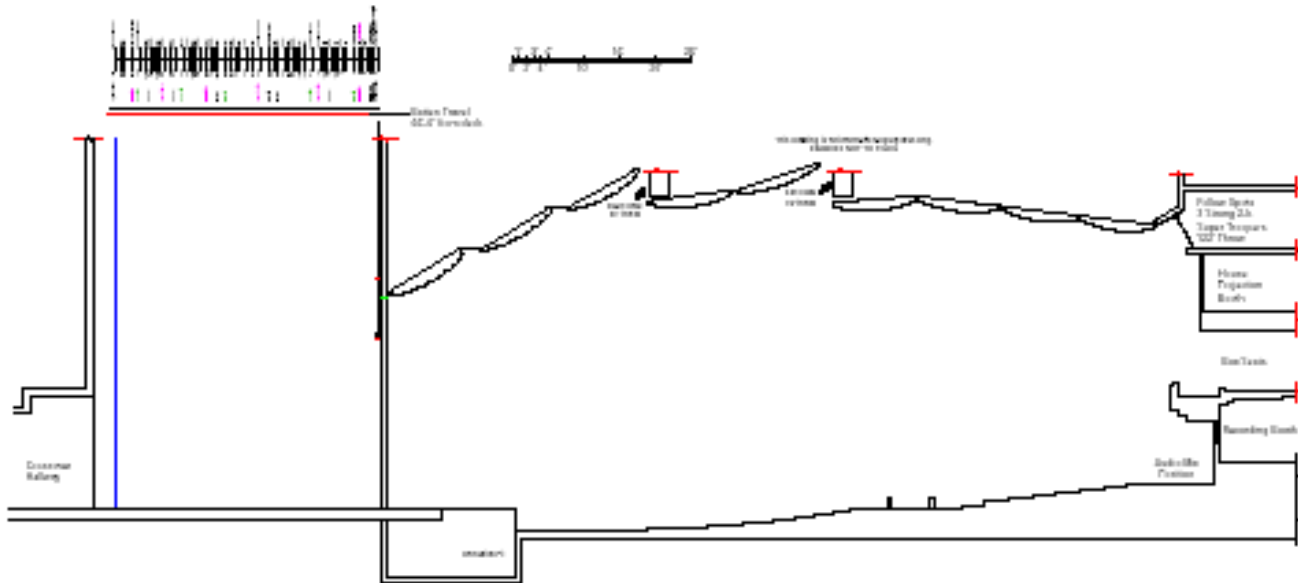


PHILHARMONIC CENTER *for the* ARTS

Theater Specifications Package

Hayes Hall

5833 Pelican Bay Boulevard, Naples FL 34108-2740



Philharmonic Center for the Arts Files Disclaimer

The Philharmonic Center for the Arts (hereinafter referred to as PCA) is committed to providing electronic access to files. We make every reasonable effort to do so in a cross-platform and complex multi-protocol environment. It is important that all potential users of these files read the following disclaimer and accept its terms as a prerequisite to the use of the files.

By downloading files from this web site the user agrees to the following terms and conditions:

PCA makes no warranty of any kind, express or implied, with respect to the file(s) which are the subject of this agreement, and specifically makes no warranty that said file(s) shall be marketable or fit for any particular purpose. Furthermore, any description of said file(s) shall not be deemed to create an express warranty that such files shall conform to said description.

1. Receiver assumes all risk and liability for any losses, damages, claims or expenses resulting from the use or possession of any file(s) furnished by PCA pursuant to this agreement.
2. Receiver agrees to indemnify, defend and hold harmless PCA, its officers, agents, and employees from and against any and all claims, suits, losses, damages or costs, including reasonable attorney's fees, arising from or by reason of receivers; use or possession with respect to any of the file(s) furnished by PCA pursuant to this agreement, and such indemnification shall survive acceptance of said file(s) by receiver.
3. Since revisions or additions to the file may occur at any time, the Receiver agrees to indemnify, defend and hold harmless PCA, its officers, agents, and employees from and against any and all claims, suits, losses, damages or costs, including reasonable attorney's fees, arising from the use of outdated design files, and such indemnification shall survive acceptance of said file(s) by receiver.
4. These terms and conditions constitute the complete and final agreement of the parties hereto.



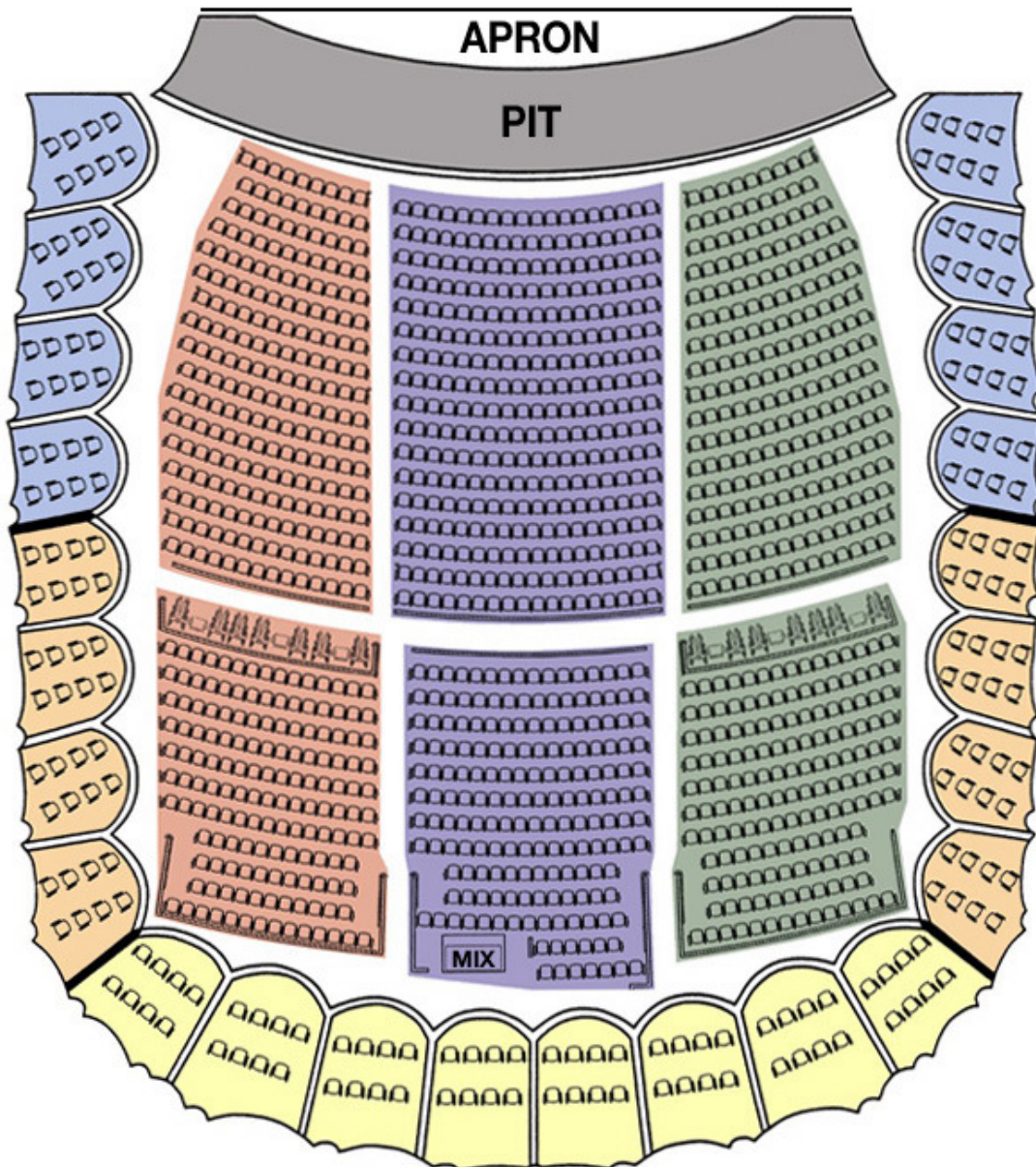
PHILHARMONIC CENTER *for the ARTS*

Theater Specifications Package

Hayes Hall

5833 Pelican Bay Boulevard, Naples FL 34108-2740

Hayes Hall Seating Chart





PHILHARMONIC CENTER *for the* ARTS

Theater Specifications Package

Hayes Hall

5833 Pelican Bay Boulevard, Naples FL 34108-2740

Carpentry

Hayes Hall is a proscenium theater and is the main stage facility of the Center.

Our Fire Curtain falls between the plaster line and the Main Curtain, and cannot be breached.

HAYES HALL SEATING CAPACITY

Total gross seating capacity:	1473
Net seating capacity with PIT seating:	1461
Deducting (4) house and (8) seats in President's box	
Deducting (52) Guest Circle seats:	1413
(52 seats is the maximum allowed in the pit by fire code. Guest Circle Seating may be added if the company does not use the pit for orchestration and is at the discretion of the Phil's Production Manager.)	
Mix position: (12' x 8')	27
If required by production, up to 27 seats may be blocked, adjacent to the mix position.	

The Phil reserves the right to refrain from selling the house seats held for emergency situations and the President's box.

STAGE DIMENSIONS

Width:

Hard Portal: 66' {20.12m}
Soft Portal adjustable to: 35' {12.19m}
From Center Line to:
SL (shell storage): 40' {12.19m}
SR (fly rail): 50' {15.24m}

Height:

Proscenium: 31' { 9.45m}
Adjustable by main curtain trim
Stage floor to auditorium floor: 38" {.96m}

Depth:

From back wall of stage to:
Main Curtain (plaster line): 37' {11.28m}
Edge of apron @ center: 47' {14.33m}
Edge of pit @ center: 57' {17.37m}
(Note: stage and apron/pit edge curved, measurements reduced 5' {1.52m} at proscenium arch
Note: Orch pit moves as 1 piece, screw drive, adjustable to any height.)



PHILHARMONIC CENTER *for the* ARTS

Theater Specifications Package

Hayes Hall

5833 Pelican Bay Boulevard, Naples FL 34108-2740

LOADING DOCK FACILITIES

Located at the southeast corner of building with 30' push to upstage right. Dock area within walled enclosure.

Dock Width: 16' {4.88m}

Dock Height: 3' 9" {1.14m}

(With electric adjustable dock plate; can accommodate from 3' to 5' of height.)

Loading door opening: 16" wide x 13' 6" high

A maximum of two trailers can be unloaded at the dock simultaneously. Trucks can be left at the dock only if they do not interfere with other Center activities. Three trailers with cabs plus two tour buses will fit in the loading area at one time.

Fly system/line plot

Grid height: 56' 6"

Fly Rail: Stage Right, Stage Level.

Available Counterweight: approx. 19,000 lb. Single Purchase Manual Counterweight System.

Arbor Capacity: 980 lbs.

Stage weight inventory is 533 full bricks @ 28# and 410 half bricks @ 14#. This inventory represents all surplus weight after a house "strip". All battens are at pipe weight. There are no cables or electric boxes hanging.

Measurements:

53 linesets; Batten length 63' - except for line sets #1, 2, 3, 7 which are 80' (#5 + #6 are 57')

Batten Travel 55' 8" from deck, 53-1/2"

Total Travel IN Height is 30" - OUT Height is approximately 55'8"

Electrics:

House Electric's are truss battens.

All electrics use six-circuit socopex and most attach SR side of pipe. (5 SL)

Acoustical Shell:

House sound shell and permanent installations cannot be stripped.

HOUSE SOFT GOODS

All goods no fullness

- (5) Leg sets, black velour: 28'h x 12'w
- (5) Borders, black velour: 10'h x 63'w
- (2) Full stage black velour, center split: 28'h x 63'w
- (1) Sharkstooth scrim, black: 30'h x 63'w
- (1) Full stage white muslin backdrop: 30'h x 63'w (seamed Cyc)
- (1) White seamless Cyc: 30'h x 63'w
- (1) Sharkstooth scrim, white: 30'h x 55'w
- (3) Utility Border: 8'h x 20'w
- (1) Utility Border: 8'h x 17'w
- (1) American flag 18'h by 27'w
- (3) 8' sections of pipe and drape



PHILHARMONIC CENTER *for the* ARTS

Theater Specifications Package

Hayes Hall

5833 Pelican Bay Boulevard, Naples FL 34108-2740

Philharmonic Center for the Arts / Naples, FL / Hayes Hall Lineset Schedule
Revised Jan 2009

HOUSE LINESET	PURPOSE	DISTANCE FROM P.L.	NOTES
	ORCH. PIT WALL	MINUS 20' - 0"	MEASURED AT CENTER
	STAGE APRON EDGE	MINUS 10' - 0"	MEASURED AT CENTER
0' - 0"	PLASTER LINE	0' - 0"	ALL MEASURED FROM HERE
N / A	FIRE CURTAIN	0" - 11"	MUST STAY CLEAR ON DECK
1	HOUSE CURTAIN	11" - 1'- 6"	COPPER IN COLOR
2	Movie Screen (removable)	1' - 9"	1ST AVAILABLE LINESET
3	PORTAL LEGS	2' - 3"	COPPER IN COLOR
4		2' - 10"	
5		3' - 3"	
6	1ST. ELEC.	3' - 8"	TRUSS BATTEN
7	ORCH. CLOUD 1	4' - 9"	PERMANENT
8		5' - 8"	
9		6' - 3"	
10		6' - 9"	
11	BORDER 2	7' - 2"	
12	LEGS 2	7' - 8"	
13		8' - 3"	
14		8' - 9"	
15	2ND. ELEC.	9' - 3"	TRUSS BATTEN
16	ORCH. CLOUD 2	10' - 8"	PERMANENT
17		11' - 5"	
18		12' - 3"	
19		12' - 9"	
20		13' - 3"	
21		13' - 9"	
22		14' - 3"	
23	BORDER 3	15' - 2"	
24	LEGS 3	15' - 9"	
25	ORCH. CLOUD 3	16' - 8"	PERMANENT
26	3RD. ELEC.	17' - 9"	TRUSS BATTEN
27		18' - 9"	
28		19' - 9"	
29		20' - 8"	
30		21' - 3"	



PHILHARMONIC CENTER *for the* ARTS

Theater Specifications Package

Hayes Hall

5833 Pelican Bay Boulevard, Naples FL 34108-2740

HOUSE LINESET	PURPOSE	DISTANCE FROM P.L.	NOTES
31		21' - 9"	
32	ORCH. CLOUD 4	22' - 9"	PERMANENT
33	BORDER 4	23' - 9"	
34	LEGS 4	24' - 2"	
35		24' - 9"	
36	4TH. ELEC.	25' - 3"	TRUSS BATTEN
37		26' - 3"	
38		26' - 9"	
39		27' - 3"	
40		27' - 9"	
41	ORCH. CLOUD 5	28' - 7"	PERMANENT
42	BORDER 5	29' - 9"	
43	LEGS 5	30' - 3"	
44	5TH. ELEC.	31' - 3"	TRUSS BATTEN
45		31' - 9"	
46		32' - 3"	
47		32' - 9"	
48	BORDER 6	33' - 3"	
49	LEGS 6	33' - 9"	
50	ORCH. CLOUD 6	34' - 11"	PERMANENT
51	6TH. ELEC.	35' - 9"	TRUSS BATTEN
52		36' - 9"	
53		37' - 3"	LAST AVAILABLE LINESET
54	ORGAN PIPE COVER	38' - 5"	PERMANENT



PHILHARMONIC CENTER *for the* ARTS

Theater Specifications Package

Hayes Hall

5833 Pelican Bay Boulevard, Naples FL 34108-2740

Orchestra/Music/Props

ORCHESTRA MATERIAL

- (100) Wenger Symphony Chairs (84 for off-site events available)
- (13) Wenger Cello Chairs (10 for off-site events available)
- (9) Wenger Bass Stools
- (135) Wenger Music Stands
- (100) Music Stand Lights
- (2) Conductors Music Stand and Podium
- (2) Solo Cello/Harp Platforms
- (2) Bass Platforms 3' x 5' x 4"
- (6) Bass Platforms 3' x 5' x 8"
- (14) Wooden Barstools, assorted height and seat pads available

Additional material/instruments are available from the Philharmonic Center for the Arts with advance notice and permission.

ORCHESTRA SHELL

The Center owns a stage orchestra shell manufactured by Wenger Corporation from their "Designer Shell" series constructed of panels of molded fiberglass-reinforced gypsum. There are six (6) overhead ceiling panel units (clouds), each approximately six (6) feet deep and ranging from 66' to 48' long. Each contains lighting units consisting of prefocused ETC Source 4 PAR 575w lamps controlled in zones for various shell configurations. These panels can not be removed from their battens and are a permanent fixture of the house hung in their storage position. There are ten (10) tower units that serve as sidewalls. Each is thirteen (13) feet wide and rides on airsled/tri-caster assemblies. They have counterweighted carts and nest for storage down stage left. Four are back wall units, which can create a back wall of up to 48'. Each is 23' 6" tall. There are three side tower units per side. Each has a 7' 6" tall door unit on each side. The height of each is angled to match cloud angles. The first is 29' 6" on the downstage side and 26' 6" on the upstage side. The second ranges from 26' 6" to 23' 6" and the third from 23' 6" to 20' 6". The shell can be erected in a variety of different configurations. Details of these enclosure patterns are available from Randall Henderson. He will be able to help you select a size and configuration to fit your show.



PHILHARMONIC CENTER *for the ARTS*

Theater Specifications Package

Hayes Hall

5833 Pelican Bay Boulevard, Naples FL 34108-2740

PLATFORMING

Wenger Versalite 3000 Platform Tops

Hayes Hall Stage	Daniels Pavilion
(33) 4' x 8'	(18) 4' x 8'
(4) 4' x 6'	
(8) 4' x 4'	
(4) 3' x 8'	
(2) wedges	

Leg Sets: 6 in a set

Hayes Hall Stage	Daniels Pavilion
(14) 48"	
(99) 40"	
(63) 32"	(12) 32"
(159) 24"	(15) 24"
(104) 16"	(17) 16"
(72) 12"	
(155) 8"	(66) 8"
(42) 6"	

Also available for use with platforms: Chair rails, standing rails, step units and black pleated masking drapery.

PROP/BANQUET FOLDING TABLES

(14) 8' x 2'6"	(4) 6' x 1'6"	(48) cabaret round
(10) 6' x 2'6"	(1) 6' x 3'	(25) 4' round

MISCELLANEOUS

- (9) 10' portable ballet barres
 - (10) Rolls Rosco Dance Floor Reversible Media Grey/Black
 - (5) Rolls Rosco Dance Floor Reversible White/Black
 - (2) 7' Johnson Bars
 - (1) Pallet Jack
 - (1) 6' wood ladders
 - (2) 8' fiberglass ladders
 - (1) 10' fiberglass ladders
 - (1) 12' fiberglass ladders
 - (1) Genie PCL-36 Personnel Lift
 - DC operation only, 36' basket height Integrated outrigger system.
 - **Liability regulations require use of outrigger system for all personnel.**
 - (10) yellow jackets (Cable troughs)
 - (6) 8' x 8' black masking flats for quick change booths.
 - (6) 4' x 8' black masking flats for quick change booths.
- Carpeting available for dressing rooms A-D and H.



PHILHARMONIC CENTER *for the* ARTS

Theater Specifications Package

Hayes Hall

5833 Pelican Bay Boulevard, Naples FL 34108-2740

Electrics

CONTROL

ETC Obsession II Version 5.1.0

(336) 2.4K dimmers

Dimmer per circuit system

POWER

(3) 400 AMP, three-phase service panels, located downstage left

(1) 400 AMP, three-phase service panels, located upstage right

(2) 50 AMP, single phase, 220 V shore power legs. Standard RV plugs.

FRONT OF HOUSE

First Cove: [Near Cut]

38' from plaster line

44' above stage level

58' throw, vertical angle 44°

(30) ETC Source 4 750w {19°} hung split center @ approximately 2' intervals

(20) ETC Source 4 {19°} (10 Far SL & 10 Far SR) to approximate box boom positions

(6) Altman 6x22 with iris 1K

Second Cove: [Far Cut]

64' from plaster line

44' above stage level

78' throw, vertical angle 37°

(32) ETC Source 4 750w (10°) hung split center @ approximately 2' intervals

OVERSTAGE LIGHTING ACCESSORIES AND HARDWARE

Color Media

All color media in house is Rosco or Lee. Any other requirements must be artist supplied, or conversion numbers provided.

(8) Source 4 PARS

(111) 575 Source 4's with available 36° & 26° Barrels (15 source 4 19' Barrels available)

(30) Standard Pattern Holders for 6" leko

(16) 10" Top Hats

(12) Barn Doors for 8" fresnels

(44) Side Arms 24" with double tees

(4) Side Arms 18" with single tees

(5) Union grounded three pin cable 100'

(60) Union grounded three pin cable 50'

(71) Union grounded three pin cable 25'

(101) Union grounded three pin cable 10'

(55) Two-fers

(4) Twin Spins for source 4's

(90) Source 4 Pattern holders: (20) B size, (30) A size

(22) Floor bases

(10) Barn doors for par 64's



PHILHARMONIC CENTER *for the* ARTS

Theater Specifications Package

Hayes Hall

5833 Pelican Bay Boulevard, Naples FL 34108-2740

ADDITIONAL LIGHTING INSTRUMENTS

- (8) Dance Booms in Box Truss. Source Four 26° @ 1', 3', 5', 7', 9' & 11' centers.
- (2) 40' Aluminum Box Truss w / 60K PAR 64's
- (5) Bars of 4 ACLs
- (24) Altman 6x9 ellipsoidal 1K
- (23) Altman 8" Fresnels 1K
- (26) Altman 6: Fresnels 750W
- (80) Par 64 1K very narrow, medium or wide flood available
- (18) L&E mini-strip lights with MR16's
- (18) Chauvet Colorado Batten 72, L.E.D. strip lights
- (8) ETC Source 4 Iris
- (10) Altman 1K 3 cell Sky Cycs
- (2) Altman 6 x 4.5 ellipsoidal 750W
- (1) DF-50 atmospheric hazer
- (2) Source Four 10° and (2) Source Four 5° units in our FOH Projection Booth.
- (2) Wybron 8 light audience blasters

FOLLOWSPOTS

- (4) Strong Xenon Super Troupers 2K
Booth: 116' from plaster line 38' above stage level, 122' throw

FLOOR POCKETS

- (6) repeated circuits each
- (5) each side of stage

DSL 1 #133-138 **DSR** 1#138-144



PHILHARMONIC CENTER *for the* ARTS

Theater Specifications Package

Hayes Hall

5833 Pelican Bay Boulevard, Naples FL 34108-2740

Sound

FRONT OF HOUSE SYSTEM

CONSOLE

- (1) Yamaha PM 5D-RH 56 input digital console

POWER

100 AMP, three-phase, isolated ground panels located DSL or DSR

MAINS DRIVE RACK

- (1) BSS Soundweb Jellyfish remote control
- (2) Klark Teknik DN360 equalizers (1 for stereo system, and 1 for box fills/auxiliary mix)

FILLS/AUX DRIVE RACK

- (2) BSS TCS-804 alignment delays for stage level side fills and front fills
- (2) Klark Teknik DN360 equalizers (1 for side & front fills, and 1 for auxiliary mixes)

PLAYBACK/RECORDING RACK

- (1) Denon DN600F CD player
- (1) Tascam MD-350 mini-disc player/recorder

MAIN SYSTEM

- (10) Meyer Sound Milo line array (5 per side, dead-hung and permanent)
- (8) JBL VT4880 double 18" subwoofers
- (4) Crown MA5002VZ amplifier for Vertec subs

BOX, SIDE AND FRONT FILLS

- (2) Meyer CQ-2 (1 on each side as box fills)
- (2) Meyer UPA-1P (1 on each side as stage level side fills)
- (8) EAW JF80 front fill speakers 4 per side
- (2) QSC PLX1602 front fill amplifiers



PHILHARMONIC CENTER *for the* ARTS

Theater Specifications Package

Hayes Hall

5833 Pelican Bay Boulevard, Naples FL 34108-2740

FRONT OF HOUSE POSITION

The mix position is 116' from the plaster line, located against the back wall of the theatre. There is freedom for the engineer to stand and walk without disturbing the audience. It is roughly 12' wide, by 8' deep and is located slightly house left of center. Snake runs need to be 200' minimum. AC with isolated ground is available.

MONITOR SYSTEM (16 MIXES)

CONSOLE

- (1) Midas H3000 52 input

PROCESSING

- (6) BSS FDS366 Omnidrive compact plus crossovers
- (8) Klark Teknik DN360 equalizers
- (2) DBX166 comp/limiters
- (1) Yamaha SPX990

AMPLIFIERS

- (6) QSC MX3000a (lows for 12 wedge mixes)
- (6) QSC MX1500a (highs for 12 wedge mixes)
- (5) QSC PLX3402 (subs and lows for side fills, sub and low for drum fill, and cue wedge low)
- (3) QSC PLX1602 (highs for side fills, drum fill, and cue wedge)

SPEAKERS

- (16) EAW SM200 wedges each with (1) 12" and (1) 2"
- (1) EAW SB150 single 15" drum fill subwoofer
- (4) EAW LA325 side fill speakers with (2) 15s", (2) 4"s, and (1) 1.4"
- (2) EAW SB625z side fills subs each with (2) 15"s
- (4) Galaxy un-powered Hot Spot
- (2) Galaxy powered Hot Spot

AUDIO SNAKES

- (1) 58 input, 3 way splitter, transformer isolated with pin 1 lift on each input
- (2) 12 channel 100' sub snakes
- (2) 12 channel 75' sub snakes
- (2) 12 channel 50' fan to fan sub snakes



PHILHARMONIC CENTER *for the* ARTS

Theater Specifications Package

Hayes Hall

5833 Pelican Bay Boulevard, Naples FL 34108-2740

MICROPHONES

AKG

- (3) C408
- (3) C418
- (4) C414B ULS
- (4) C451EB with ck1 capsules
- (4) C460 with ck61 ULS capsules
- (2) D112

Barcus Berry

- (2) BBE4000XL pickups

Beyer Dynamic

- (6) M88

Crown

- (8) GLM100
- (6) PCC160

Earthworks

- (4) SR71

EV

- (4) RE20
- (6) ND468

Schertler

- (2) pairs piano pickups

Sennheiser

- (4) MD421
- (2) MD421 II
- (2) MD441
- (8) MKH40 P48

Shure

- (1) Beta 52
- (8) Beta 57
- (6) Beta 58
- (4) Beta 87
- (1) Beta 91
- (12) Beta 98
- (6) KSM 44SL
- (5) SM57
- (14) SM58
- (2) SM58 w/switch

WIRELESS MICROPHONES

- (6) Channels UHF Shure UR Series Handheld Wireless with Beta 58a or Beta 87 handhelds, and body packs with MKE-2s for each channel. Shure UR in the L3 band, 638.000-698.000 MHz.
- (4) KSM-9 capsules available for use with wireless handhelds.

MIC STANDS

- (27) tall tripod stands
- (6) short tripod stands
- (29) boom arms
- (10) Atlas round base tall chrome stands
- (6) Atlas table stands

MIC CABLES

- (70) cables in 10', 20', 25', 40', and 50' lengths



PHILHARMONIC CENTER *for the ARTS*

Theater Specifications Package

Hayes Hall

5833 Pelican Bay Boulevard, Naples FL 34108-2740

RECORDING SYSTEM

For recording the Naples Philharmonic Orchestra, details are available on request.

COMMUNICATIONS

2 channel Clear-Com system with program feed on B channel

Dressing room page & program feed

Staff uses Motorola 2-way radios, frequencies available upon request.

HARD OF HEARING SYSTEM

Phonic Ear FM system with selectable frequencies from 72.025 MHz to 75.975 MHz

LECTERNS

- (2) DaLite Oravisual Concord floor model with rosewood finish, electric height adjustment, timer/clock, and (2) Crown LM300 condenser microphones

BACKLINE

BASS AMP

- (1) SWR SM500 amplifier
- (1) Hartke 410 cabinet
- (1) Hartke 115 cabinet

GUITAR AMPS

- (1) Roland JC120
- (1) Fender Twin

KEYBOARDS

- (1) Roland XP-60 with sustain and volume pedals
- (1) Korg Triton Extreme 88

KEYBOARD AMP

- (1) Roland KC500

DRUMS

- (1) Yamaha Recording Series drum kit. See drum inventory next page.

A/V EQUIPMENT

- (1) Sanyo PLC-XF47 LCD Projector (15K Lumens) 124' throw from Projection Booth to P.L.
- (1) 30'w x 20'h Front Projection Screen (Clancy clamps to, and flies on, any system pipe)
- (1) 9' x 12' Rear or Front Projection Screen
- (1) 12' x 12' Front Projection Only

Video lines from DSR to projection booth include: VGA, S-Video, BnC and CAT5.



PHILHARMONIC CENTER *for the* ARTS

Theater Specifications Package

Hayes Hall

5833 Pelican Bay Boulevard, Naples FL 34108-2740

YAMAHA RECORDING SERIES DRUM KIT (GLASSY BLACK) INVENTORY

Rack Toms

8" x 8"

10" x 8"

12" x 10"

13" x 9"

14" x 12"

Floor Toms

14" x 14"

16" x 16"

Kick Drums

18" x 16"

22" x 16"

Snare Drums

14" x 5.5" Yamaha Steel Shell

13" x 4" Pearl Brass Piccolo

Crash Cymbals

16" Zildjian

17" Sabian

18" Sabian

Ride Cymbals

21" Sabian

Sizzle Cymbals

20" Zildjian

China Cymbals

17" China

Splash Cymbals

9" Zildjian

Thrones

Gibraltar or Yamaha Round Thrones



PHILHARMONIC CENTER *for the* ARTS

Theater Specifications Package

Hayes Hall

5833 Pelican Bay Boulevard, Naples FL 34108-2740

Dressing Rooms/Wardrobe

The following contain permanent hanging racks, lighted makeup mirrors, shower and toilet facilities:

(4) **Star, A, B, C, D** - 8' x 10'

1 mirror each

Located USR, stage level

(1) **Chorus, E** - 16' x 21'

12 mirrors (with men's facilities)

Located USR one floor above stage level

(1) **Chorus, F** - 16' x 16'

8 mirrors (with women's facilities)

Located USR one floor above stage level

Other spaces available by prior arrangement only:

(1) **Optional makeup room G** –

17 mirrors

Located USR one floor above stage level. No shower, toilet or water facilities.

(1) **Dressing room H** - 10' x 16'

3 mirrors

Located off stage left, across from the Green Room

Private bathroom with shower and 2 telephone lines

(1) **Green (Musicians) Room** (16' x 34') (29' x 34' including bathrooms)

Located SL, stage level. No hanging racks. Includes lounge, separate men's and women's shower and toilet facilities

PHONE NUMBERS

	Direct Line
Studio #1	(239) 254-2797 (239) 254-2798 (239) 254-2799
Studio #2	(239) 254-2794 (239) 254-3025 (239) 254-2796
Dressing Room A	(239) 254-2785
Dressing Room B	(239) 254-2786
Dressing Room C	(239) 254-2787
Dressing Room D	(239) 254-2788
Dressing Room H	(239) 254-2792
Green Room	(239) 254-2791

Visiting Company Production Office (239) 254-2676

Visiting Company Long Distance Code by request.



PHILHARMONIC CENTER *for the* ARTS

Theater Specifications Package

Hayes Hall

5833 Pelican Bay Boulevard, Naples FL 34108-2740

WARDROBE

The wardrobe room is located at stage level USL. There is easy hallway access to the loading dock or on the stage. The wardrobe room holds one clothes washer and dryer. Another two washer+dryer sets are available USL.

- | | |
|---------------------------|------------------------------|
| (2) Jiffy J-2000 Steamer | (5) Steam Irons |
| (1) Work table 3'x6' | (2) Wardrobe Trash cans |
| (4) Ironing boards | (6) Rolling wardrobe racks |
| (2) Folding wardrobe rack | (1) Sewing machine and cover |

HIGH SPEED INTERNET ACCESS

Coverage includes all of the "office space" you'll have, as well as the Green Room, all first-floor dressing rooms and SL and SR wing space. Our IT department limits the bandwidth, and blocks many recreational sites. This is done to encourage legitimate business usage only.

HOUSE GUIDELINES

Any cabling runs provided by visiting companies must not be exposed to foot traffic in the audience chamber. Union house crew will assist with preferred pathways. For anything flying downstage of the proscenium, cabling must be dressed as unobtrusively as possible.

Road crew personnel working showcalls in the audience chamber must wear proper attire. No shorts or T-shirts please.

We do not kill seats for lighting control. Please use our light booth located behind the last row of seats House Right of Center. The booth has an unobstructed view of the stage, and a sliding glass window.

Smoking is not permitted on the loading dock. Designated smoking areas at the street end of the loading dock have ashtrays available.